



ELIT FTCB15-50

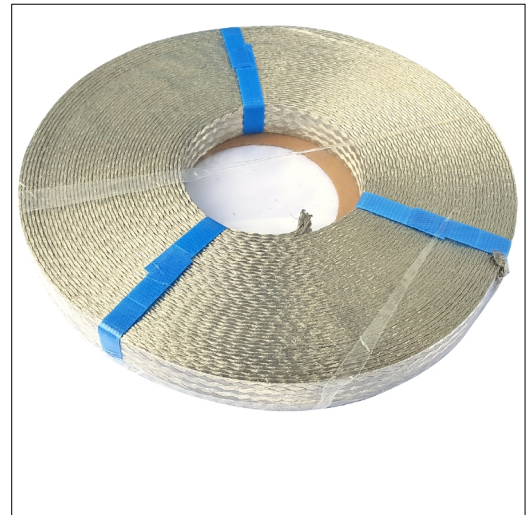
Flat tinned copper braid on a 25m roll. Very flexible and with a cross section of 50mm²

Technical description

Flat tinned copper braid on a roll of 25m. The laces are braided together with 2848 pcs. of 0.15mm thick tinned copper wires that give a total cross section of 50mm². Nominal current is 250A and widely used in earthing applications, but may also have other applications. The laces have a width of 28mm and a thickness of 3mm. Can only be purchased in whole rolls.

Advantages:

Provides simple and flexible earthing in many applications
Non-magnetic material that makes it very useful related to EMC
Tinned surface for long durability



Product name/ Art.nr/ GTIN	ELIT FTCB15-50/ 20250045/ 7070810007424
According to:	---
Conductor material	Copper
Conductor surface	Tinned
Nominal cross section conductor	50 Square millimetre
Conductor category	Class 6 = very flexible
Shape of conductor	Flat
Cable width approx.	28 Millimetre
Cable height approx.	3 Millimetre